



# **GDEW0371W7 Picture Production and Bitmap Convert**



**GDEW0371W7**

Dalian Good Display Co., Ltd.

# Picture Production and Bitmap Convert

for

## GDEW0371W7



Pic.01

In order to achieve the effect in the Pic.1 ,we will briefly introduce how to make the picture and bitmap convert.

### 1. How to Make the Picture

GDEW0371W7 doesn't support gray scale, so you need to make a black picture with 416\*240 resolution. Make the content that which needs to be displayed in black, the other content in white in the picture, and then saved as *.bmp*.

## 2. Bitmap Convert

Choose Software *zimo1221* which in ZIP package. Parameter setting as following ( Pic.2 ) :

**2.1** Open *zim221*, choose the picture which need to convert.

**2.2** "Output file type": Choose "C array (\*.c)".

**2.3** "Scan mode": Choose "Vertical Scan";

**2.4** "BitsPixel": Choose "monochrome"

**2.5** "Max Width and Height": Choose "416" and "240", and then click the arrow to make sure.

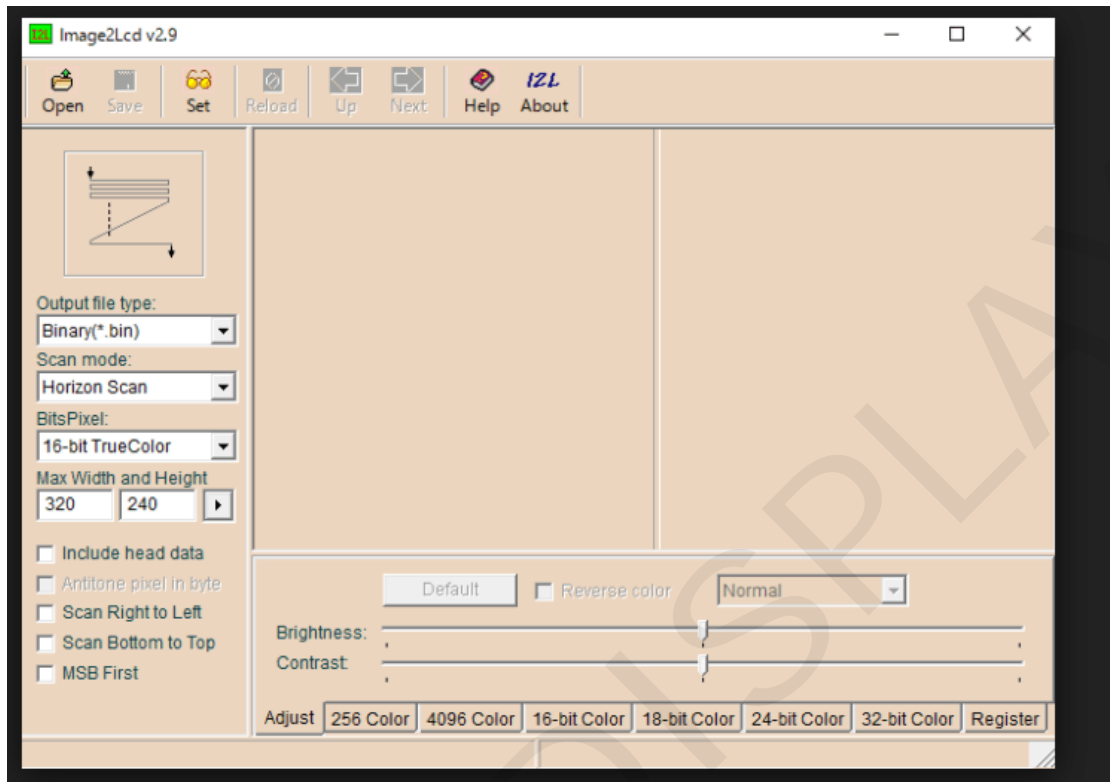
**2.6** Choose "Scan Right to Left".

**2.7** Choose "Reverse color" if you want to make Positive Display

(Black on White); If you want to make Negative Display (White on Black), then don't need to choose "Reverse color".

**2.8** Click "Save", then save the new array as the file of ".c"

**2.9** Finally, please replace the array of ".c" file with the corresponding array in the program.



Pic. 2