



Picture Production and Bitmap Conversion



GDEW0213V7LT

Dalian Good Display Co., Ltd.

Picture Production and Bitmap Conversion for GDEW0213V7LT



Figure 1

Take Figure 1 for example, we will briefly introduce how to make picture and convert bitmap.

1. How to Make Picture

Make a pure black and white picture of 212*104 resolution (gray scale is not supported), and save it as a BMP or JPG file (BMP is recommended).

2. Bitmap Conversion

Open *Image2lcd.exe* in the RAR package. Parameter setting is shown in Figure 2:

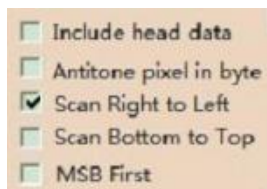
2.1 Open the picture;

2.2 "Output file type": Choose "C array (*.c)";

2.3 "Scan mode": Choose "Vertical Scan";

2.4 "BitsPixel": Choose "monochrome";

2.5 "Max Width and Height": Fill in "212" and "104", and click the arrow to confirm;



2.6 Tick the third one;

2.7 "Reverse color": Tick if you don't want to reverse color;

2.8 Click "Save" to save the array as a file of ".c";

2.9 Replace the corresponding array in the program with the array of ".c" file.

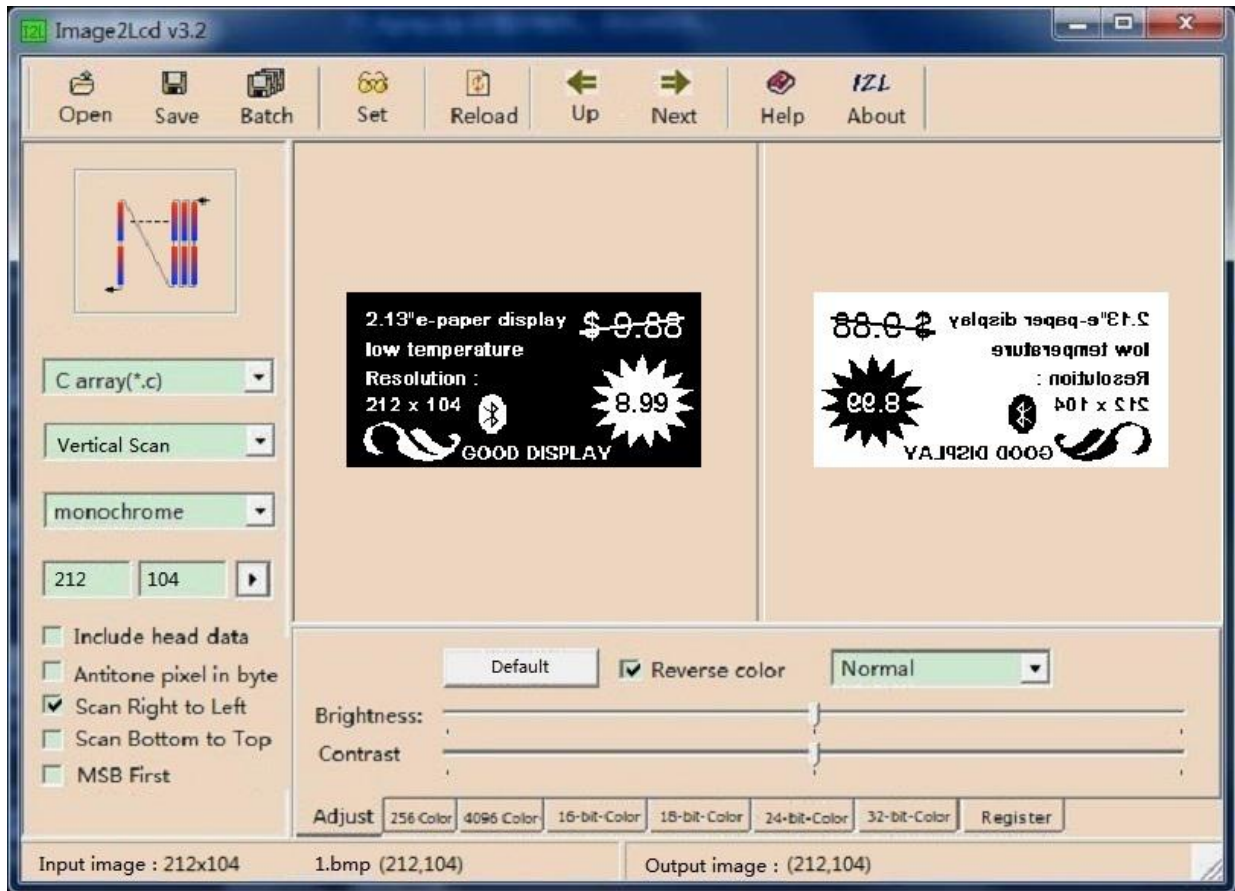


Figure 2