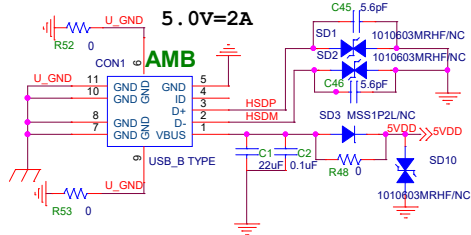
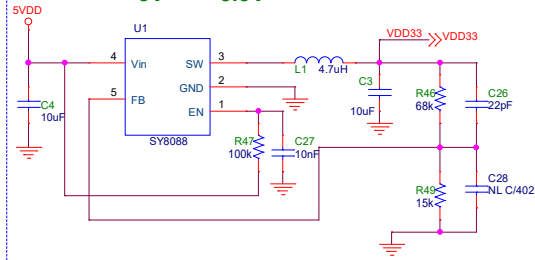


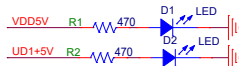
VBUS USB 1 INPUT(Device for Ameba)



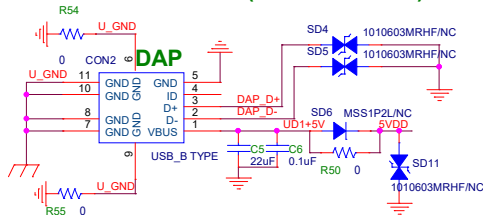
+5V --> +3.3V



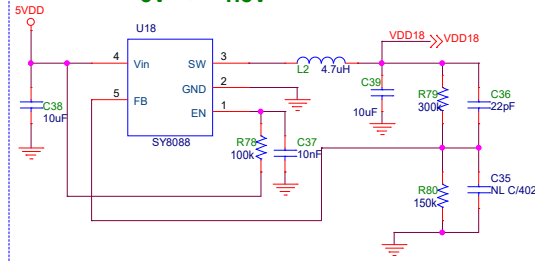
Power indicator



VBUS USB 2 INPUT(Device for DAP)



+5V --> +1.8V



HSDP

HSDM

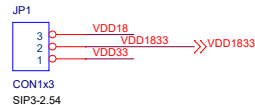
DAP_D+

DAP_D-

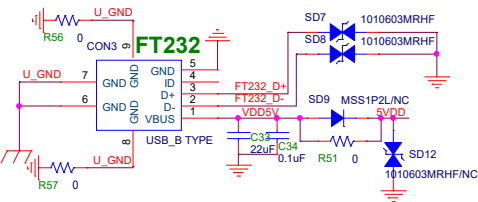
FT232_D+

FT232_D-

UD1+5V

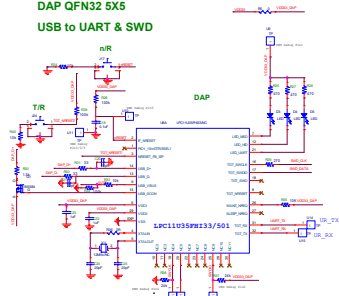


VBUS USB 3 INPUT(Device for FT232RQ)

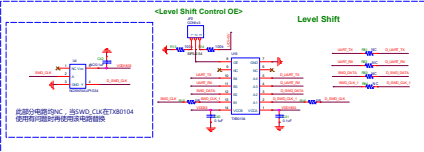


Title		ARMEBA_MB	
Size	Document Number	Rev 1.0	
Custom	DC Power		
Date:	Sheet	1	of 2

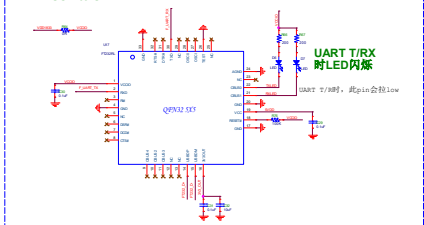
DAP QFN32 5X5
USB to UART & SWD



<Level Shift Control OE> **Level Shift**

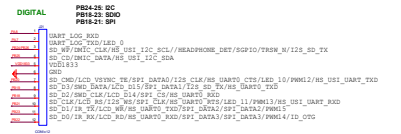
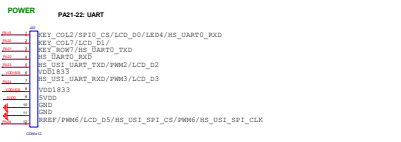


FT232RQ QFN32 5X5
USB to UART



GPIO GROUP & Function-Mux

Complete Pin-Mux Table pls Check Datasheet of Relative Chip



The Interface of Function Extension

