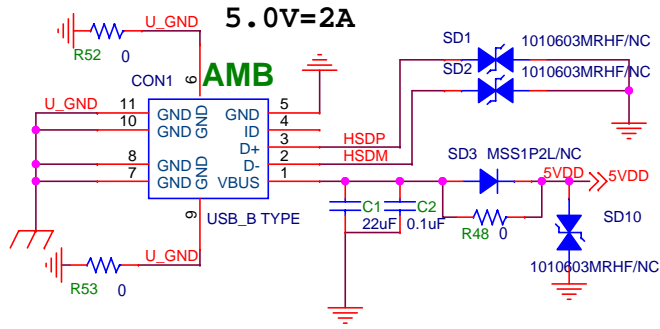
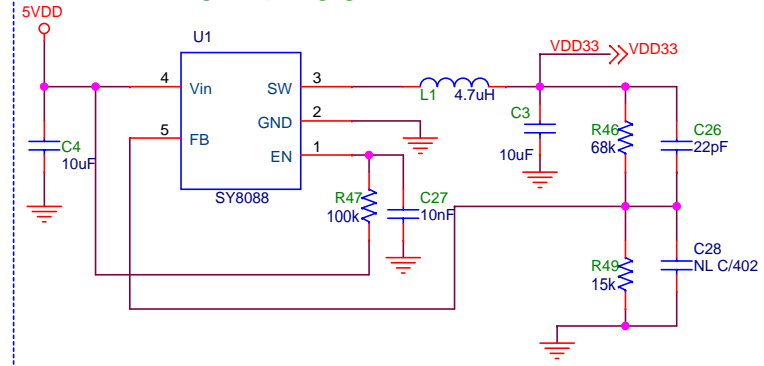


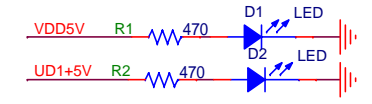
VBUS USB 1 INPUT(Device for Ameba)



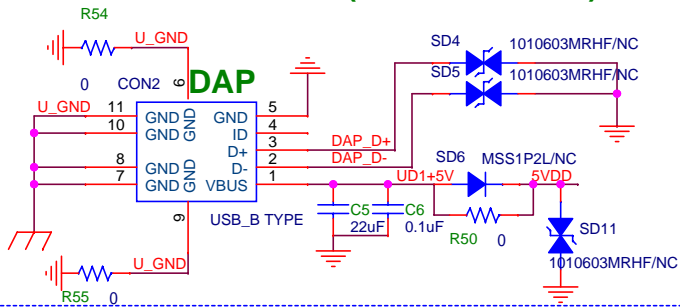
+5V --> +3.3V



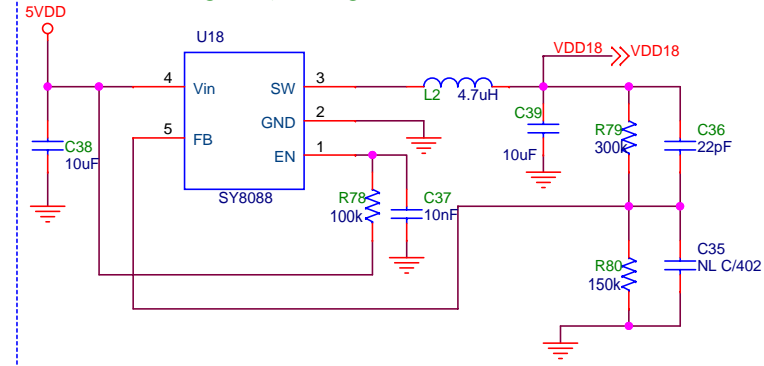
Power indicator



VBUS USB 2 INPUT(Device for DAP)



+5V --> +1.8V

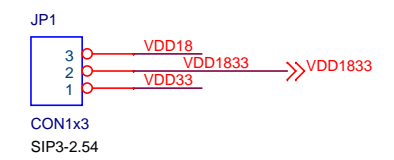


HSDB >>> HSDB
HSDM >>> HSDM

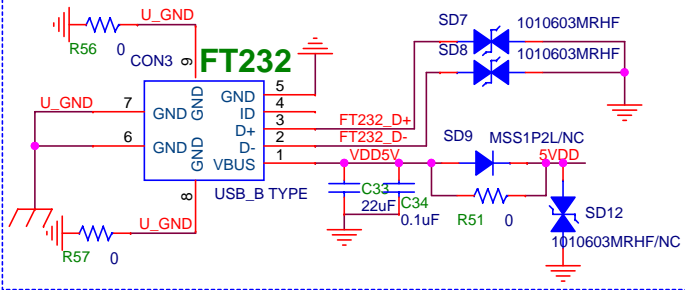
DAP_D+ >>> DAP_D+
DAP_D- >>> DAP_D-

FT232_D+ >>> FT232_D+
FT232_D- >>> FT232_D-

UD1+5V >>> UD1+5V

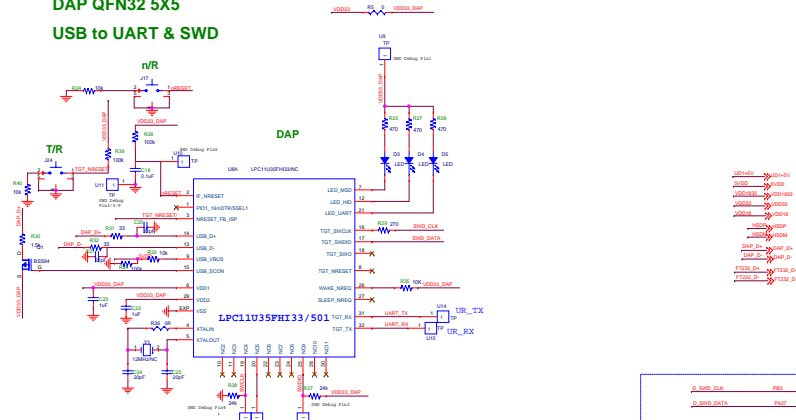


VBUS USB 3 INPUT(Device for FT232RQ)

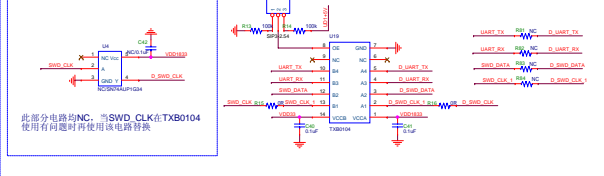


Title		
ARMEBA_MB		
Size	Document Number	Rev
Custom	DC Power	1.0
Date:	Sheet 1 of 2	

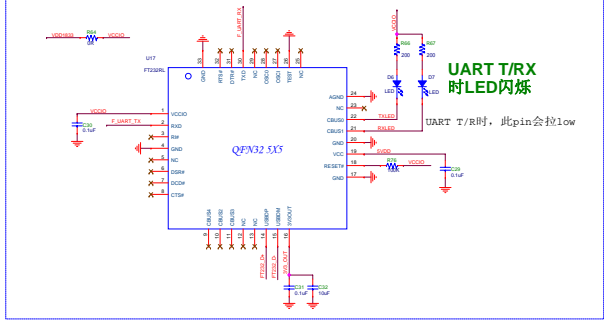
DAP QFN32 5X5
USB to UART & SWD



<Level Shift Control OE>



FT232RQ QFN32 5X5
USB to UART



GPIO GROUP & Function-Mux

Complete Pin-Mux Table pls Check Datasheet of Relative Chip

POWER PA21-22: UART

PA21	KEY_COL2/SPIO_CS/LCD_D0/LED4/HS_UART0_RXD
PA20	KEY_COL7/LCD_D1/
PA21	KEY_ROW7/HS_UART0_TXD
PA20	HS_UART0_RXD
PA21	HS_USI_UART_TXD/PWM2/LCD_D2
PA20	VDD1833
PA21	HS_USI_UART_RXD/PWM3/LCD_D3
PA20	VDD1833
PA21	SVDD
PA20	GND
PA21	RREE/PWM6/LCD_D5/HS_USI_SPI_CS/PWM6/HS_USI_SPI_CLK

DIGITAL PB24-25: I2C PB18-23: SDIO PB19-21: SPI

PB24	UART_LOG_RXD
PB25	UART_LOG_TXD/LED_0
PA20	SD_WP/DMIC_CLK/HS_USI_I2C_SCL//HEADPHONE_DET/SGPIO/TRSW_N/I2S_SD_TX
PA21	SD_CD/DMIC_DATA/HS_USI_I2C_SDA
PA20	VDD1833
PA21	GND
PA20	SD_CMD/LCD_VSYNC_TE/SPI_DATA0/I2S_CLK/HS_UART0_CTS/LED_10/PWM12/HS_USI_UART_TXD
PA21	SD_D3/SMD_DATA/LCD_D15/SPI_DATA1/I2S_SD_TX/HS_UART0_TXD
PA20	SD_D2/SMD_CLK/LCD_D14/SPI_CS/HS_UART0_RXD
PA21	SD_CLK/LCD_RS/I2S_MS/SPI_CLK/HS_UART0_RTS/LED_11/PWM13/HS_USI_UART_RXD
PA20	SD_D1/IR_TX/LCD_WR/HS_UART0_TXD/SPI_DATA2/SPI_DATA2/PWM15
PA21	SD_D0/IR_RX/LCD_RD/HS_UART0_RXD/SPI_DATA3/SPI_DATA3/PWM14/ID_OTG

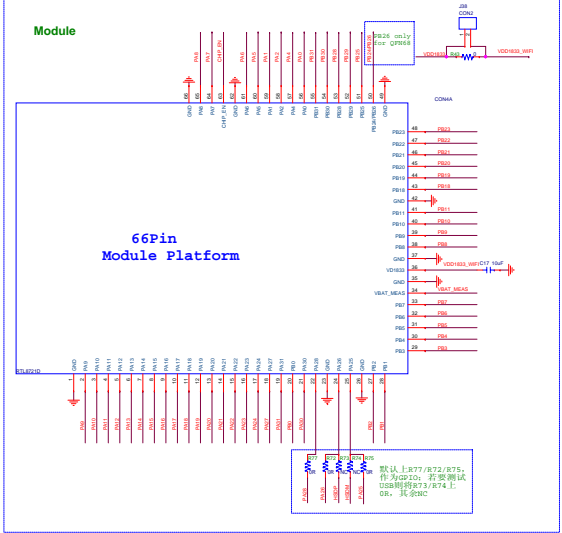
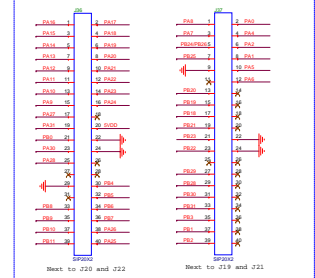
DIGITAL PB4-7: ADC PA25-26: ICI

PB4	TOUCH_KEY0/ID_OTG/LED8
PB5	TOUCH_KEY1/LP_I2C_SCL
PB6	TOUCH_KEY2/LP_I2C_SDA
PB7	TOUCH_KEY3/LED9/UART_LOG_TXD
PA25	HSDP/PWM5/LCD_D6/HS_USI_SPI_MISO/KEY_COL0/LP_UART_TXD/LP_I2C_SDA
PA26	HSDP/PWM4/LCD_D7/HS_USI_SPI_MOSI/KEY_COL1/LP_UART_RXD/LP_I2C_SCL

DIGITAL PB1-2: UART

PB1	AOITP_R/SGPIO/LED12/TRSW_P/I2S_CLK
PB2	AOITN_R/GPIO_X6/LCD_CS
PB1	AOITN_L/GPIO_X7
PB2	AOITP_L/ODC_PHA/I2S_MS
PB1	ADC_CH4/LP_UART_TXD/LED6/DMIC_CLK/
PB2	ADC_CH5/LP_UART_RXD/SGPIO/LED7/DMIC_DATA/UART_LOG_RXD

The Interface of Function Extension



此部分电路均NC, 当SWD_CLK在TXB0104使用有问题时可使用该电路替换