


|  |                           |         |     |
|--|---------------------------|---------|-----|
| <br><b>Good Display</b> | LCD MODULE SPECIFICATIONS | SPEC NO |     |
|  | GDN-D35MP4-GTT035KDH03    | REV NO  | 1.0 |

# Good Display Specifications

Type: 3.5inch TFT LCD module  
Model No. GDN-D35MP4-GTT035KDH03  
Description:


- 3.5inch LCD with 320 x RGB x 240 dots
- Play Video/Music/Picture from SD card
- RoHS Compliant

Prepared: Xiaoli Lan  
Checked: Moon Wu  
Approved: Boris Jen  
Issue Date: 2014.01.07



**Dalian Good Display Co., Ltd.**


No.17 Gonghua Street, Shahekou District, Dalian 116021 China  
Tel: +86-411-84619565 Fax: +86-411-84619585  
E-mail: [info@good-display.com](mailto:info@good-display.com)  
Website: [www.good-display.com](http://www.good-display.com)

|  |                           |         |     |
|--|---------------------------|---------|-----|
| <br><b>Good Display</b> | LCD MODULE SPECIFICATIONS | SPEC NO |     |
|  | GDN-D35MP4-GTT035KDH03    | REV NO  | 1.0 |



# Contents

|     |   |         |
|-----|---|---------|
| 1.  | Notice                                    | -----3  |
| 2.  | Technical Specifications                  | -----3  |
| 3.  | General Specifications                    | -----3  |
| 4.  | The photo of the Product                  | -----4  |
| 5.  | The interface definition of the A/D board | -----4  |
| 6.  | Keypad Diagram and Function Instructions  | -----5  |
| 7.  | PCB Structure                             | -----8  |
| 8.  | TFT LCD Panel Mechanical Drawing          | -----9  |
| 9.  | Product Label                             | -----10 |
| 10. | Packing information                       | -----10 |
| 11. | Precaution                                | -----10 |
| 12. | Trouble Shooting                          | -----11 |

|  |                           |         |     |
|--|---------------------------|---------|-----|
| <br><b>Good Display</b> | LCD MODULE SPECIFICATIONS | SPEC NO |     |
|  | GDN-D35MP4-GTT035KDH03    | REV NO  | 1.0 |

## 1. Notice: Important Safety Instructions

- The nominal voltage of DC input to the A/D board is 12V, Please note that your AC/DC adapter's output plug need to match the DC input jack, the diameter of the jack is 5.5 mm.
- Don't put the A/D board on the back of LCD display or other metallic conductor without insulation in case of being burnt for short.
- Before connecting these input/output ports, Video port, it is strongly recommended that your turn off the A/D board and remove the DC 12V plug from the DC input jack.
- Don't put the A/D board into an airtight package. When it works, it will produce a certain heat.
- When assembling it, please use a suitable force; don't distort the PCB and other components.

**CAUTION:** Information in this document is subject to change without notice. Please contact us if you have any questions or suggestions

## 2. Technical Specifications

### 2.1 Features:


- GDN-D35MP4-GTT035KDH03 TFT LCD module includes:  
Decoder board DN-35MP4, 3.5" Digital TFT LCD GTT035KDH03, Keypad board, Power cable
- Music Play: Support MP3、WMA、DRM WMA、OGG、APE、FLAC、WAV、AAC format
- Picture Review: Support JPEG、BMP、GIF、TIF、PNG format
- Video Play: Support Full format (RM、RMVB、AVI、MKV、WMV、VOB、MOV、FLV、ASF、DAT、MP4、3GP、MPG、MPEG..etc) HD 720P Video play.
- DC/ DC & LED Backlight Driver & Video Decoder All In One
- OSD controls: Allow on-screen adjustments and Choices of all kinds Playback Parameters and Display Contents.,
- This product is RoHS compliant

### 2.2 Applications:

- Advisement Player
- Other Electronic Equipments

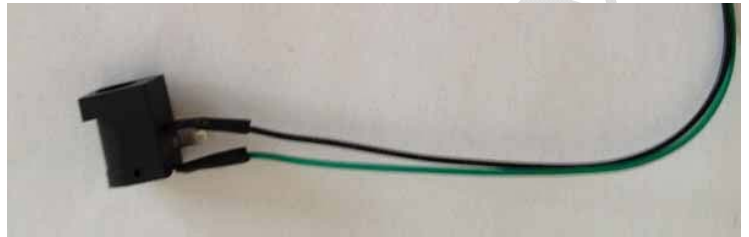
## 3. General Specifications:

| Item  | Specifications                               | Unit              |
|---|--|-------------------|
| Screen size                                   | 3.5 (diagonal)                               | inch              |
| Display ratio                                 | 4:3  |                   |
| Resolution                                    | 320×(RGB)×240                                |                   |
| Backlight                                     | LED  |                   |
| Brightness                                    | 300±50                                       | cd/m <sup>2</sup> |
| LED life time                                 | 30000(Typ.)                                  | hr                |
| View angle                                    | 40/60/60/60 (U/D/L/R)                        | °                 |
| Input/output interface                        | SD/MMC/SDHC/MS Card<br>USB port for up-grade |                   |
| LCD Display dimension                         | 76.9(W)×63.9(H)×3.2(D)                       | mm                |
| LCD Active area                               | 70.08(H)×52.56(V)                            | mm                |
| A/D board dimension                           | 68.0 (W)×55.0(H) ×9.2(D)                     | mm                |
| Operation voltage<br>(Power Ripple < 0.3VP-P) | DC12.0(Typ.) (Min.9.0, Max.15.0)             | V                 |
| Input current(DC12V)                          | DC110±10                                     | mA                |
| Power consumption                             | 1.32 (Typ.)                                  | W                 |
| Start time                                    | 3.0  | s                 |
| Operation temperature                         | 0 to 60                                      | °C                |
| Storage temperature                           | -20 to 70                                    | °C                |
| Humidity                                      | 5~95   | %RH               |

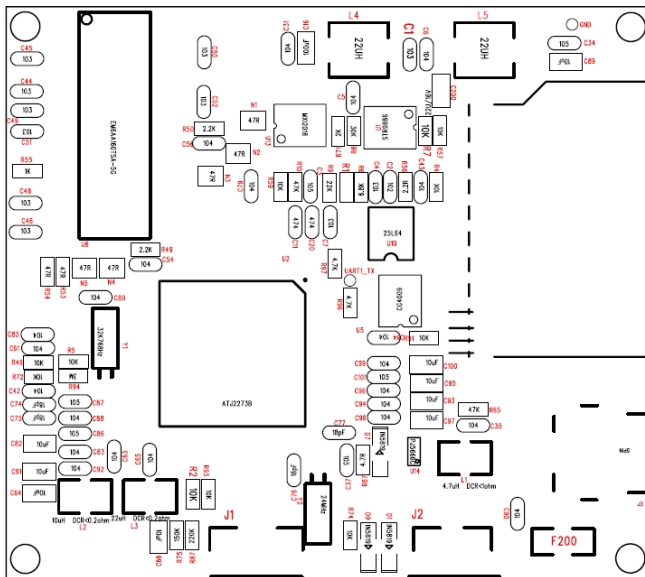
|  |                           |         |     |
|--|---------------------------|---------|-----|
| <br><b>Good Display</b> | LCD MODULE SPECIFICATIONS | SPEC NO |     |
|  | GDN-D35MP4-GTT035KDH03    | REV NO  | 1.0 |

#### 4. The photo of the Product.

##### 4.1 Real Picture of LCD and Board



##### 4.2 Silk-screen Figure of Board




#### 5 The interface definition of the A/D board

##### 5.1 J1 interface definition(1.25mm):

| PIN No. | Symbol | I/O | Description  | Remark |
|---------|--------|-----|--------------|--------|
| 1       | SAR    | I   | Keypad input |        |
| 2       | GND    | -   | Ground       |        |
| 3       | LED    | I   | Ground       |        |

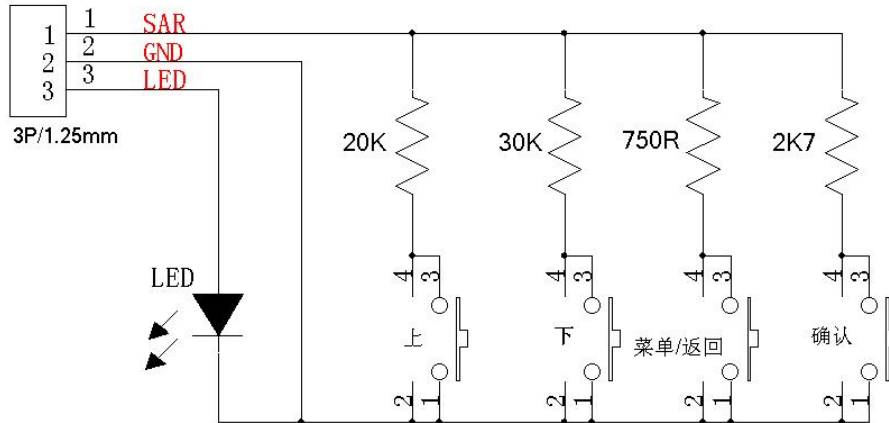
##### 5.2 J2 interface definition(1.25mm):

| PIN No. | Symbol | I/O | Description           | Remark   |
|---------|--------|-----|-----------------------|----------|
| 1       | +12V   | I   | DC power supply input | +9V~+15V |
| 2       | GND    | -   | Ground                |          |

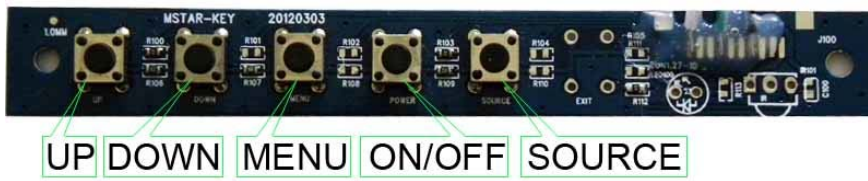
|  |                           |         |     |
|--|---------------------------|---------|-----|
| <br><b>Good Display</b> | LCD MODULE SPECIFICATIONS | SPEC NO |     |
|  | GDN-D35MP4-GTT035KDH03    | REV NO  | 1.0 |

## 6. Keypad Diagram and Function Instructions

### 6.1 Keypad Diagram:




### 6.2 Keypad Definition:




|        |                        |
|--------|------------------------|
| UP     | Next / Plus            |
| DOWN   | Former / Minus         |
| MENU   | Menu / Return          |
| POWER  | Player / Pause / Enter |
| SOURCE | -----                  |
| EXIT   | -----                  |

### 6.3 OSD Menu introduction:

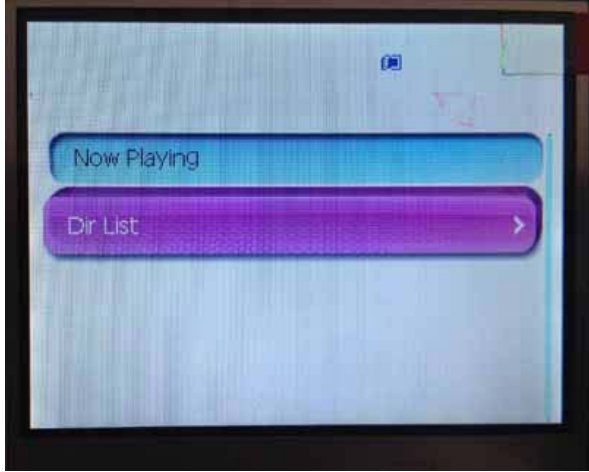
Main OSD menu contains the following submenu: **Video , Music , Photo , Setting**

|  |         |
|--|---------|
|  | Video   |
|  | Music   |
|  | Photo   |
|  | Setting |


|  |                           |         |     |
|--|---------------------------|---------|-----|
| <br><b>Good Display</b> | LCD MODULE SPECIFICATIONS | SPEC NO |     |
|  | GDN-D35MP4-GTT035KDH03    | REV NO  | 1.0 |

◆ **Video**

**Menu:** In the Main interface, select < Video> to enter into menu:


|   |                    |                   |
|---|--------------------|-------------------|
|   | <b>Now Playing</b> | Play on air video |
|   | <b>Dir List</b>    | Video List        |
| <ol style="list-style-type: none"> <li><b>1. Play/Pause:</b><br/>Press &lt;Power&gt; to play video, then press any button to show up and down information and progress bar, if there is no next operation, information and bar will disappear themselves.</li> <li><b>2. FF REW:</b><br/>When video playing or pause, <b>long</b> press &lt;UP&gt; or &lt;DOWN&gt; to realize fast forward and fast backward.</li> <li><b>3. Video Switch:</b><br/>When video playing or pause, press &lt;UP&gt; or &lt;DOWN&gt; to switch videos.</li> </ol> |                    |                   |


**Submenu:** In the playing interface, long press <Menu> to enter into submenu, There are Playback Mode、Scan Speed、Screen Size、Resume、Delete、Track、Subtitle and Information

|   |                      |  |
|---|----------------------|--|
|  | <b>Playback Mode</b> | Sequence, Repeat One, Repeat All, Shuffle or Shuffle + Repeat. |
|   | <b>Scan Speed</b>    | Press <UP> or <DOWN> to adjust from 1-4                        |
|   | <b>Screen Size</b>   | Full Screen, Original Size, Scale                              |
|   | <b>Resume</b>        | On of Off Rsume function                                       |
|   | <b>Delete</b>        | Delete present file  |
|   | <b>Track</b>         | Support multiple Track Switch                                  |
|   | <b>Subtitle</b>      | Built-in subtitle or Plug-in subtitle or Close it              |
|   | <b>Information</b>   | Relevant information of playing file.                          |

◆ **Music**


**Menu:**In the Main interface, select < Music> to enter into menu:

|  |                    |                        |
|--|--------------------|------------------------|
|  | <b>Now Playing</b> | Play on air audio file |
|  | <b>Dir List</b>    | Audio File List        |
| Empty space for detailed instructions, as per the image content                    |                    |                        |

|  |                           |         |     |
|--|---------------------------|---------|-----|
| <br><b>Good Display</b> | LCD MODULE SPECIFICATIONS | SPEC NO |     |
|  | GDN-D35MP4-GTT035KDH03    | REV NO  | 1.0 |

**Submenu:**

In the playing interface, short press <Menu> to enter into menu, and long press <Menu> to enter into submenu. There are Select EQ、Play Mode、Screen Size、AB Repeat、Delete、Advanced、EQ Settings、Information and Return music playing.

|  |                    |  |
|--|--------------------|--|
|  | <b>Select EQ</b>   | Normal, Pop, Classic, Soft, Jazz, Rock...etc   |
|  | <b>Play Mode</b>   | Sequence, Repeat One, Repeat All, Shuffle or Shuffle + Repeat.   |
|  | <b>Screen Size</b> | Spectrum, Lyric  |
|  | <b>AB Repeat</b>   | Symbol "A" with highlight when Press +/- , means waiting to confirm point "A", and it'll be confirmed when press +/- again and waiting to confirm point "B". Symbol "A-B" both with highlight when third press +/- , means point "B" is confirmed and start to repeat. And repeat will be canceled when forth press +/-. |
|  | <b>Delete</b>      | Delete present audio file  |
|  | <b>Advanced</b>    | Repeat times: Press +/- to adjust from 1-10 or ∞<br>Repeat interval: Press +/- to adjust from 1-7 s<br>Scan speed: x2, x4, x8, x16 or x32  |
|  | <b>EQ Settings</b> | User EQ: Long press <Menu> to choose different bar and change no. through +/-.<br>User SRS: Same as <User EQ>  |
|  | <b>Information</b> | Relevant information of playing file.  |

◆ **Photo**

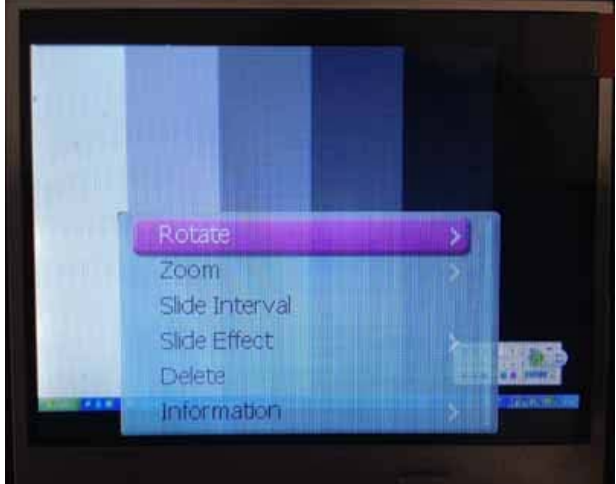
**Menu:** In the Main interface, select < Photo> to enter into menu:

1) **Play/Pause:**


Press <Power> to switch from manual or auto play, when manual playing, press +/- to browse former or next pictures

2) **Thumbnail Browsing Mode:** Press +/- to move from left to right, or Long press +/- to move from up and down.

**Submenu:** When manual browse some picture, long press <Menu> to enter into submenu. There are Rotate、Zoom、Slide Interval、Slide Effect、Delete、Advanced and Information.

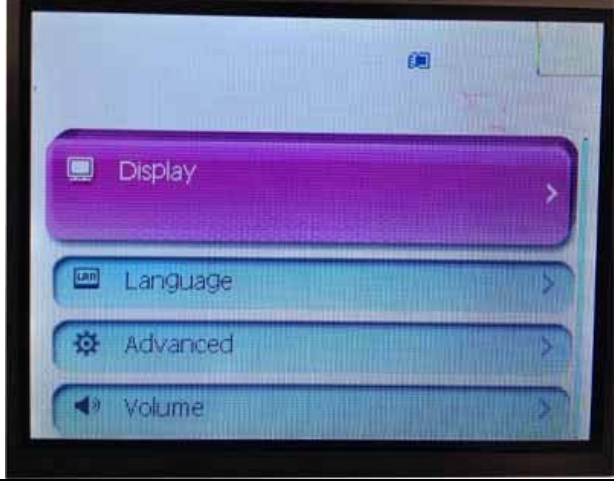
|  |                       |  |
|--|-----------------------|--|
|  | <b>Rotate</b>         | Rotate picture to 90/180/270 degree. (Note1)   |
|  | <b>Zoom</b>           | Press <Power> to Zoom in and out the pictures. After press<Menu> to exit, then press +/- to browse picture from up to down. And press <Power> to browse picture from left to right. At last, long press<Menu> to exit from thumbnail mode. (Note1) |
|  | <b>Slide Interval</b> | See menu description   |
|  | <b>Slide Effect</b>   | See menu description   |
|  | <b>Delete</b>         | Delete present photo file  |
|  | <b>Information</b>    | Relevant information of playing photo..  |

**Note1:** GIF picture is not valid on "Rotate" and "Zoom" function.

|  |                           |         |     |
|--|---------------------------|---------|-----|
| <br><b>Good Display</b> | LCD MODULE SPECIFICATIONS | SPEC NO |     |
|  | GDN-D35MP4-GTT035KDH03    | REV NO  | 1.0 |

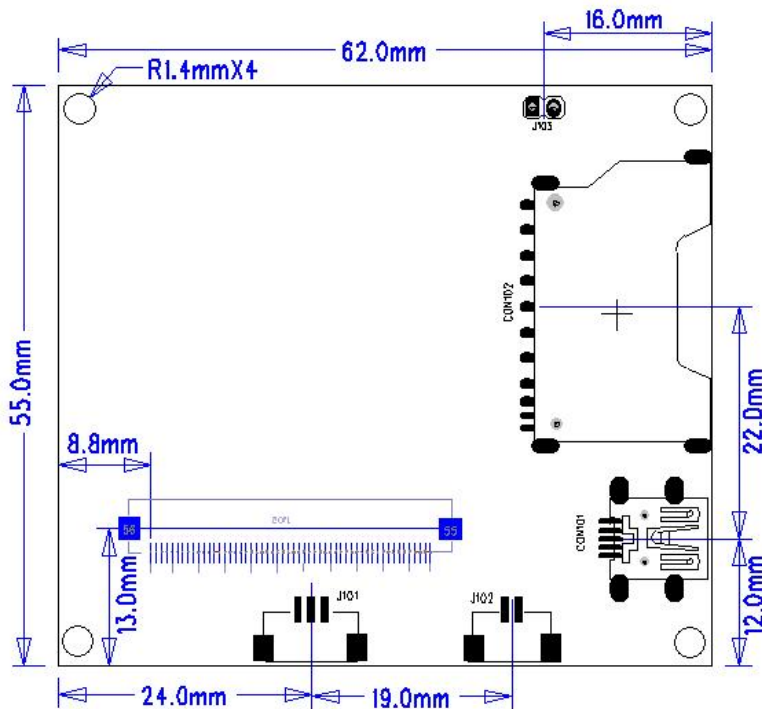
### ◆ Setting

**Menu:**In the Main interface, select < Setting> to enter into menu:

|  |                 |   |
|--|-----------------|---|
|  | <b>Display</b>  | Backlight: Off, 5s, 10s, 20s, 30s, 60s, 300s<br>When not on play mode, lcd will not close when backlight is off, and if backlight is not off, then backlight will be off when no press operating during the backlight time. |
|  | <b>Language</b> | Chinese or English  |
|  | <b>Advanced</b> | <b>1) Information:</b> User Name, Firmware Version, Card Capacity...etc.<br><b>2) Effect Setting Off:</b> Fly In, Cube, Rotate, Off.<br><b>3) Format Card:</b> Yes or No<br><b>4) Reset Default Settings:</b> Yes or No     |
|  | <b>Volume</b>   | Press +/- to adjust from 0-40   |

### 7. PCB Structure:

Outline Dimension: 68.0 (W)×55.0 (H) ×9.2(D)



### 8. TFT LCD Panel Mechanical Drawing:





Good Display

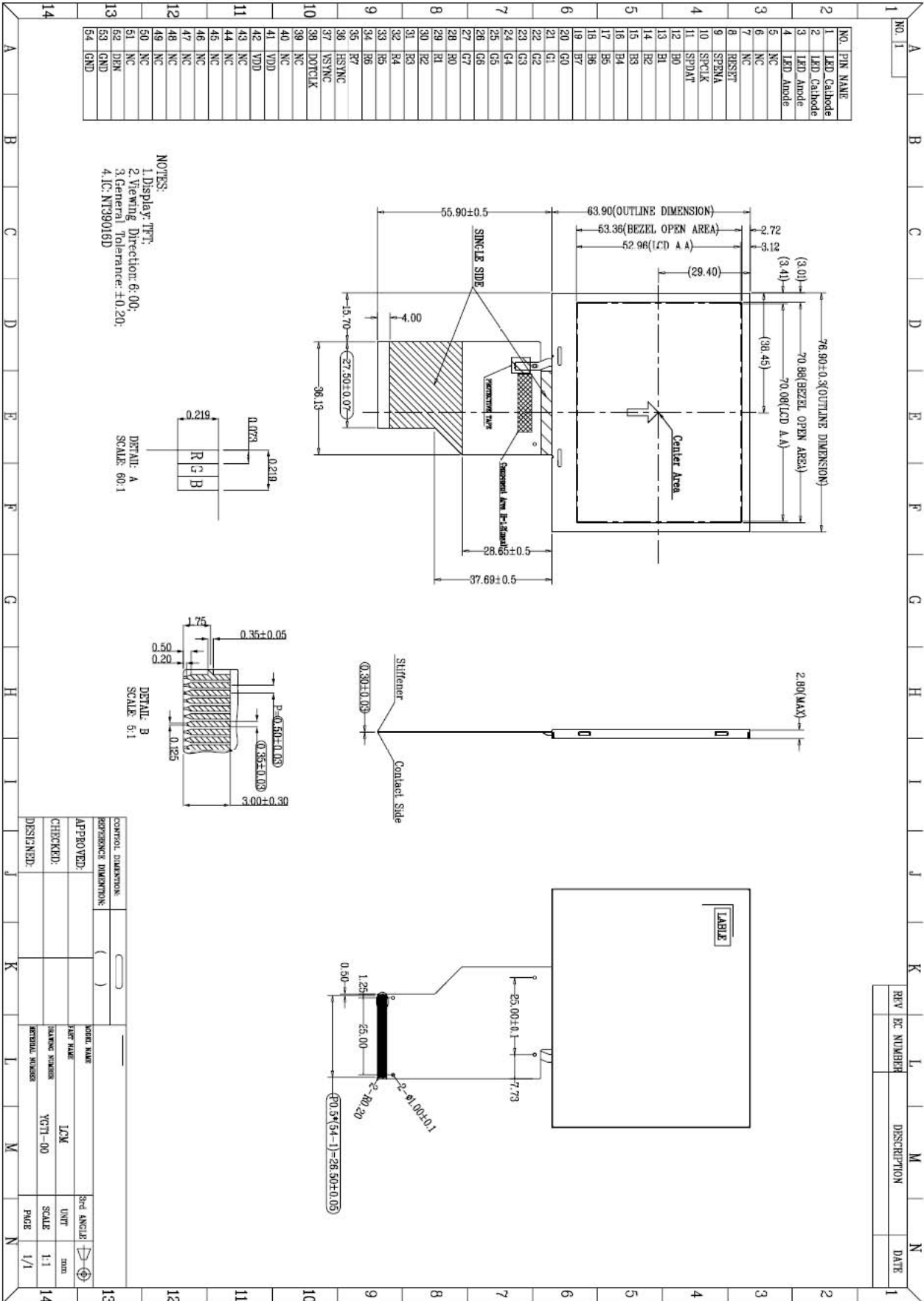
# LCD MODULE SPECIFICATIONS


SPEC NO

GDN-D35MP4-GTT035KDH03

REV NO

1.0



|  |                           |         |     |
|--|---------------------------|---------|-----|
| <br><b>Good Display</b> | LCD MODULE SPECIFICATIONS | SPEC NO |     |
|  | GDN-D35MP4-GTT035KDH03    | REV NO  | 1.0 |

## 9. Product Label



Label Dimension : 48.0X12.0mm

**XXXXXXXX / XXXXXXXX**

Production Date (Y/M/D)

Delivery Date (Y/M/D)


## 10. Packing Information

|  |   |  |  |
|--|---|--|--|
| <b>Box Information</b>   |  |  |  |
|  | Box Tare Weight: 0.06Kg<br>Package Dimension: 23.0x14.0x4.0cm                       | 0.1Kg<br>24.0x17.0x9.0cm   | 1.5Kg<br>52.0x27.0x28.0cm  |
| <b>LCD Modules Capacity</b>  | <b>2sets</b>  | <b>4sets</b>   | <b>56sets</b>  |
| <b>Remark: The above packing information is just for your reference, and we will choice the suitable outer carton for you on your quality ordered.</b> |   |  |  |

## 11. Precaution

For the sake of normal usage of this product, preventing incident from the electric shock or fire etc., please follow the precaution below instructions:

1. Before operating this appliance, read these instructions, keep these instructions, heed all warnings, and follow these instructions.
2. The DC (Direct current) supply of appliance is from the indicated AC (Alternating Current)/DC adapter. The AC voltage and AC frequencies C should be in of accord with the description of its on Metal card, the power adapter should be away from the hotness, being put in the well ventilated place.
3. AC power electric outlet and the AC power line of the AC/DC adaptor must be noticed to connect a ground well, and have an enough power supply if needed.
4. Input electric voltage of DC supply of our board is 12V/5V, the error margin is not over and above +/- 1V/, The value of the electric current changes for the different LCD and that whether to have audio amplifier or not etc. Pay attention to connect well between 12V/5V DC power electric outlet and the power electric outlets of the board.
5. Do not place the board inside of the Hull or Box that do not transmit heats, with the environment the airiness spreads well, Do not let the sunshine contact the board or other heat sources close to it, The heat sources, such as radiators, stoves, or their apparatus that produce heat.
6. Pay attention to prevent it from contacting with wetness or the dust, in order to protect the electric circuit from decaying.
7. While assembling, pay attention to reserve the certain space to keep the air spreads well, while it can prevent the conductor (for the fixed sheet iron of the of the controller board and the inverter) from contacting with the units of electricity board, from happening the short circuit with the board.( knothole install position bore etc. excepted) .

|  |                           |         |     |
|--|---------------------------|---------|-----|
| <br><b>Good Display</b> | LCD MODULE SPECIFICATIONS | SPEC NO |     |
|  | GDN-D35MP4-GTT035KDH03    | REV NO  | 1.0 |

8. While assembling, pay attention to make sure that the controller board is prevented from not being curved because of the additional pressure.
9. While assembling, notice that the controller board is in right connection with inverter, LCD, OSD keypad, choosing the right LCD work electric voltage( over low the display will not right, LCD may be burnt under over the high work voltage), The power is ON after all checking is well.
10. The circuit signal on the Keypad board, the infrared acceptor and the inverter must pass directly the electric cable to connect to the IC on the board, the attention is that avoiding short circuit and the damages from the static electricity on the hand ESD.
11. All connectors of output or input should be operated under the situation of cutting the power (pull out to put to deal with contact).
12. This product is applicable to common business usage and domestic usage, if it is applied into the environment with high temperature (such as in outdoor), high humidity, the strong vibration (carried in car), strong electromagnetism radiation, please contact our sales personnel.
  - a) Please pull out the power supply if you do not use it in a long time.

## 12. Trouble Shooting

**If experiencing trouble with the module, or it fails to operate correctly, please refer to the following instructions before returning to us for repairs.**

| Condition                               | Check Point  |
|---|--|
| 1. The picture does not appear          | Check to see that all the I/O and power cables is firmly seated in the socket.<br>Check if the brightness control is at the appropriate position, not at the minimum.  |
| 2. The screen is not synchronized       | Check if the I/O signal cable is firmly seated in the socket.<br>Check if the output level matches the input level.<br>Make sure the signal timings of the computer system are within the specification of the module.   |
| 3. The screen is too bright (too dark). | Check if the brightness or contrast control is at the appropriate position, not at the Maximum (Minimum).  |
| 4. The Screen is shaking or waving      | Press the Auto adjustment control to adjust. Moving all objects which emit a magnetic field such as motor or transformer, away from the module.<br>Check if the specific voltage is applied.<br>Check if the signal timing of the computer system is within the specification of module. |

**If you are unable to correct the fault by using this chart, stop using your module and contact us.**