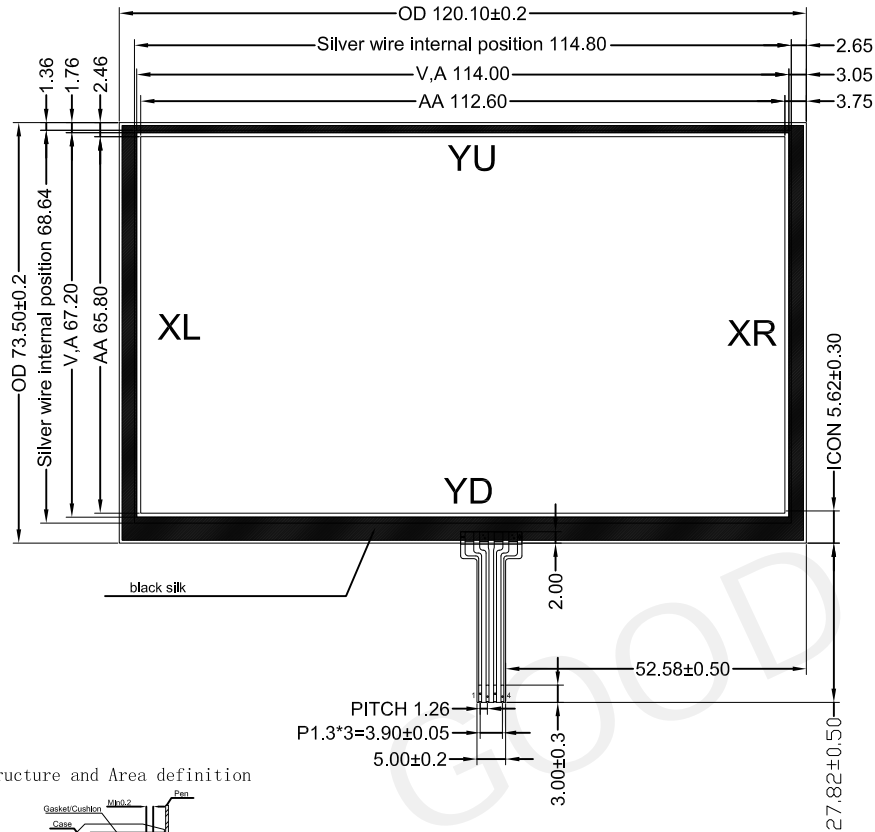
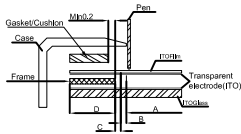


Customer Approved by:

REV	DESCRIPTION	DESIGN	DATE
A	1'ST DEGIN	JAVEN	2013.11.07
B			



Structure and Area definition



**A:Active area**

The area which guarantees a touch panel operation with the following characteristics when passed.  
 (1)Operation force, (2)Electric characteristics, (3)Tapping durability, (4)Pen sliding durability.

**B:operation non-guaranteed area**

The area which does not guarantee a touch panel operation and its function when this area is pressed, touch panel shows degradation of its performance and durability such as a pen sliding durability becomes about one-tenth compared with the active area (Area-(a) as guaranteed area) and its operation force requires about double. About 0.5mm outside from a boundary of the active corresponds to this area.

**C:Pressing prohibition area.**

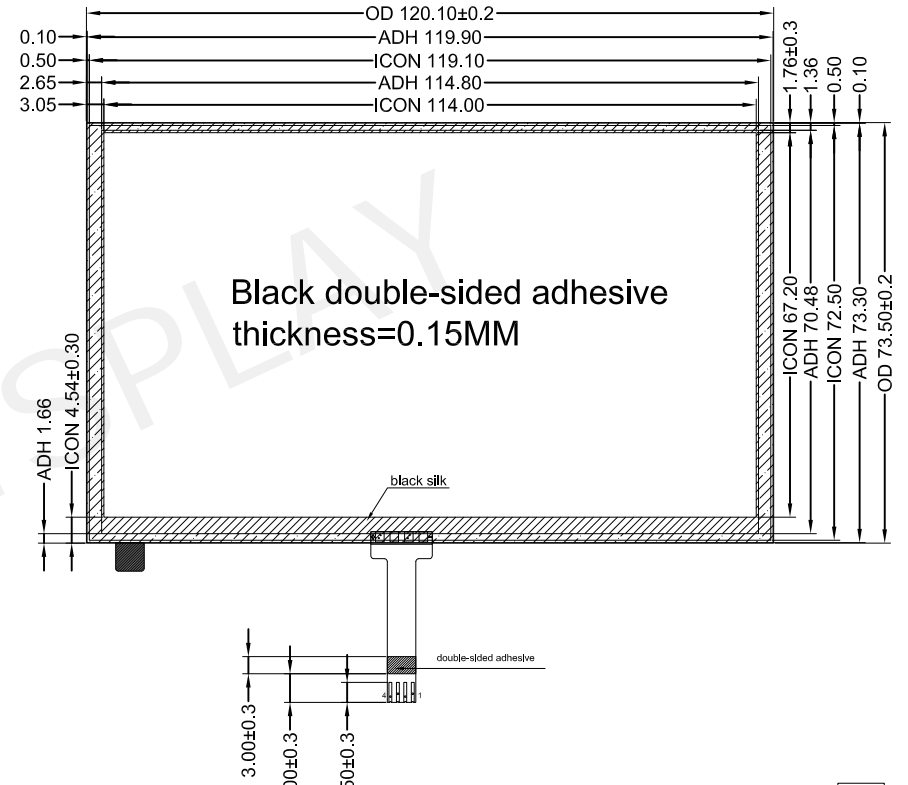
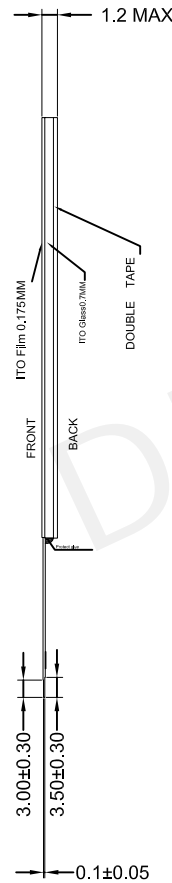
The area which forbids pressing, because an excessive load is applied to a transparent electrode and a serious damage is given to touch panel function by pressing.

**D:Non-Active area**

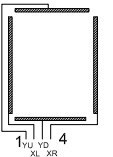
The area which does not activate even if passed.

**Notes:**

- Type: film+glass+FPC  
Film: Matte screen (0.175mm)
- Operating Voltage: 3V 5V
- operation Temperature: -10°C ~ 60°C <=90%RH  
Storage Temperature: -20°C ~ 70°C <=90%RH
- Life: 1,000,000 times
- Response Time: ≤10ms
- Linearity: ≤1.5%
- Transmittance: ≥80%
- Surface Hardness: 3H (Pencil)
- operation force: ≤100g
- Resistance:  
(ITO Film) x: 200Ω ~ 1000Ω  
(ITOGlass) y: 200Ω ~ 900Ω
- Unspecified Tolerance: ±0.2
- ROHS Standard



Pin NO:	Assignment
1	YU(Y-)
2	XL(X-)
3	YD(Y+)
4	XR(X+)



Circuit Diagram



**DALIAN GOOD DISPLAY CO., LTD.**

Web: [www.good-display.com](http://www.good-display.com)

Email: [info@good-display.com](mailto:info@good-display.com)

APPROVALS		DATE	MODEL NUMBER :	PROJECTION	GENERAL TOL.		UNITS
APP	CHK				N.T.S.		MM
			GDTE050T-2				
		131107	DO NOT SCALE THIS DRAWING.				1