



55 inch OLED Screen Series



GDOB5500CB

Dalian Good Display Co., Ltd.

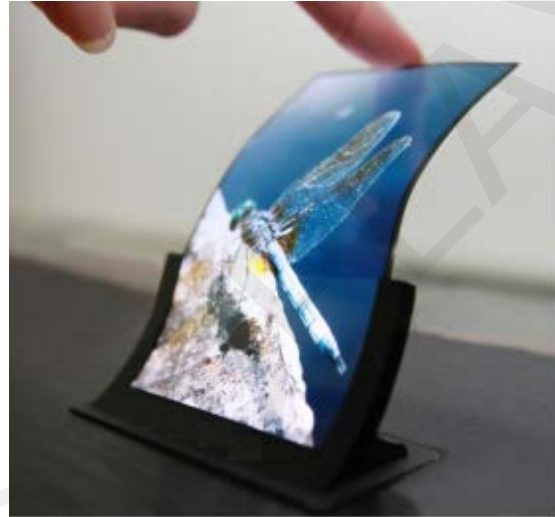
55 inch OLED Flexible Screen Specification



1. Product Features

OLED (Organic Light Emitting Diode) display technology is different from traditional LCD and quantum dot technology.

OLED do not require a backlight, it uses pixel self-illumination technology, using very thin organic coatings and glass substrates. These organic materials illuminate when



current is passed through. Since each pixel can be turned on and off independently, the OLED display can achieve an amazing black display. The detail of each pixel can enhance the depth of the color, making the picture colorful. Moreover, the OLED display screen is lighter and thinner, with a larger viewing angle and more energy saving.

OLED flexible splicing screen is an open curved display with expandable and flexible performance that can adapt to different space sizes and shapes. The strong visual impact makes it a perfect landmark. The surface design has extraordinary space utilization efficiency, and it can also

have eye-catching stunning effects through convenient installation.

➤ **Self-illumination Technology**

The OLED is composed of an organic molecular film and can be self-illuminating solid state devices. Compared to traditional LCD and LED or quantum dot display technologies, OLEDs are thinner, brighter, more colorful, more visible, and consume less power.

➤ **Infinite Contrast and Perfect Black Display Effect**

Self-illuminating pixels can be turned on and off independently, showing a perfect black effect with no light leakage. The absolute black display creates an infinite contrast.

➤ **Precise and Stable Color**

Self-illuminating pixels accurately restore color and bring the picture to life.

➤ **Full HD & Perfect View**

OLEDs have a wide viewing angle (up to 178 degrees from top to bottom and left and right), and they can maintain stunning images from all angles.

➤ **Smooth dynamic picture for faster response**

OLED displays have nearly 5,000 times dynamic picture response time, making the picture more perfect and smoother.

➤ **Perfect Industrial Design**

Since its two-layer structure, the OLED display has an incredibly thin and light body.

2. Technical Parameter

55 inch Flexible Splicing Screen		
Panel	Screen Size	55 inch
	Technology	OLED
	Screen Ratio	16:9
	Native resolution	1920 X 1080 (FHD)
	Compatible resolution	600x1200 ; 1366*768; 1280x1024 ; 1280x768; 1024x768 ;832x624 ;800x600 ; 720x400 ; 640x480
	Brightness	400nit (Standard)
	Display color	1.07 Billion colors
	Color gamut	92%
	Viewing Angle (Horizontal xVertical)	178°X178°

	Response time	1ms (G to G) , 8ms (MPRT)
	Surface treatment	Hard coating (2H), front polarizer Reflection treatment (reflectance, typical value 1.0%)
	Working Life(Typ)	30000 hours
	Working time	18 hours / day (dynamic video screen only)
	Direction	Support vertical / horizontal
	Stitching method	Support unlimited stitching
Interface	Signal input	HDMI , DP , VGA , DVI , AV , USB
	External control	RS232C IN/OUT, infrared receiver
Splicing function	<p>The same display unit can display any one of a variety of types of input signals, the signal type is optional: HDMI, DP, VGA, DVI, AV.</p> <p>It can realize single-screen display mode, full-screen display mode, any combination of splicing display mode, picture-in-picture mode.</p>	
Features	<ul style="list-style-type: none"> · Using the latest V-BY-ONE driver chip, the peripheral circuit is simpler and consumes less power. · The efficient 3D flow filter image processing engine makes the output image clearer and more realistic. · It has an automatic temperature control system for more stable operation. · It has a USB power-up upgrade feature for easy maintenance and assembly. · The screen can be calibrated by remote control or 	

	<p>software to adjust the brightness, diagnose still images.</p> <ul style="list-style-type: none"> · Provide relevant product information 	
Physical Characteristics	Border color	Black
	Border Width	<p>Shutdown frame size 7.2/7.2/7.2/7.2mm (U/D/L/R)</p> <p>Boot border size</p> <p>1. Landscape</p> <p>-2000R Concave surface: 9.9/13/8.5/8.5mm , Convex surface : 9.9/13/10.7/10.7mm (U/D/L/R)</p> <p>-3000R Concave surface : 9.9/13/8.6/8.6mm (U/D/L/R)</p> <p>-4000R Convex surface : 9.9/13/9.9/9.9mm (U/D/L/R)</p> <p>-4500R Convex surface : 9.9/13/9.8/9.8mm (U/D/L/R)</p> <p>-5000R Concave surface : 9.9/13/9.8/9.8mm , Convex surface : 9.9/13/9.7/9.7 (U/D/L/R)</p> <p>-8000R Concave surface : 9.9/13/9.1/8.5mm (U/D/L/R)</p> <p>-10 000 Convex surface : 9.9/13/9.5/9.7mm (U/D/L/R)</p> <p>-30 000 Concave surface: 9.9/13/9.2/8.5mm, Convex surface: 9.9/13/9.4/9.7 (U/D/L/R)</p>

		<p>2. Portrait</p> <p>-1500R Concave surfac:8.75/11.8/9.3/9.3mm , Convex surface : 11/14.1/9.3/9.3mm (U/D/L/R)</p>
	<p>Screen size (W x H x D)</p>	<p>Bare machine</p> <p>1. Landscape (W x H)</p> <p>-2000R Concave surface 1213.7X704.1mm , 2000R Convex surface : 1214.2X704.1mm</p> <p>-3000R Concave surface : 1223.1X704.1mm , -4000R Convex surface : 1226.2X704.1mm -4500R Convex surface: 1227.0X704.1mm -5000R Concave surface: 1227.5X704.1mm Convex surface: 1227.5X704.1mm -8000R Concave surface: 1228.8X704.1mm, -10 000R Convex surface: 1229.0X704.1mm -30 000 Concave surface: 1229.2X704.1mm Convex surface: 1229.2X704.1mm</p> <p>2. Portrait (W x H)</p> <p>-1500R, Concave surface: 1229X700.7mm -1500R, Convex surface: 1229.2X701.2mm</p> <p>3. Landscape/ Portrait (D) - Unaffected by direction and surface thickness</p> <p>-Only Module: 21.4mm (With front frame) -Module + Middle pole: 30mm -Module + Middle pole +T-Con box : 41.2mm</p>

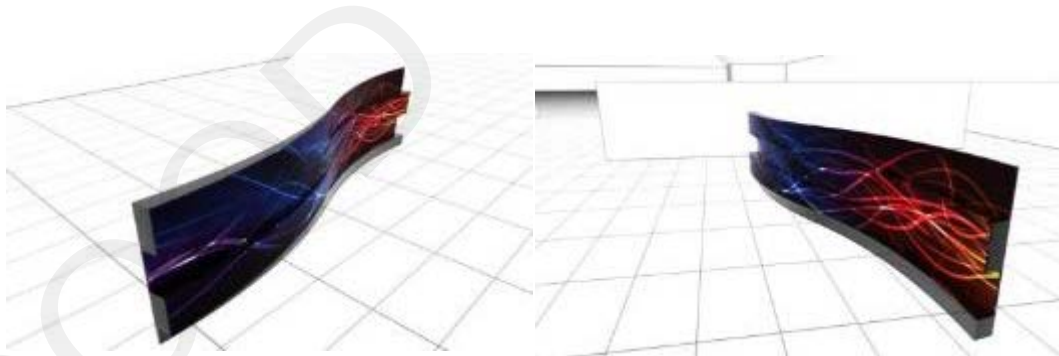
		- Module + Middle beam + Timing control box + Sign box : 91.2mm -Timing control box 312.2X213.4X16mm (Sign box) 412.6X222.4X64.3mm
	Net weight	(Bare machine) 2.4kg
	Driving splicing box size	450x325x51mm
	Package Size (W x H x D)	1118x1367x163mm (10 pieces in a box)
Environmental conditions	Operating temperature	0°C- 40°C
	Humidity	10%- 80%
Power supply	Power supply	100-240V~ , 50/60HZ
	Power type	Built-in power supply
Power consumption	Power consumption (Typ)	190W
	Standby	Below 0.5W
Software compatibility		SuperSign OLED, SuperSign C
Annex	Basis	Remote control, power cord, installation manual, HDMI cable, power cord, RS232C adapter cable, interface shield, bracket, FFC cable (single screen 110mm x 4, for connection panel and timing control box)
	Optional accessory	1. Multimedia player 2. OPS configuration

Certification	<ol style="list-style-type: none"> 1. The product has passed the mandatory CCC certification 2. OLED splicing control system software
---------------	---

3. OLED Curved Design Ideas

➤ **Outspread Screen**

The screen is a foldable movable partition composed of multiple sets of partitions, which serves to separate, beautify, keep out of the wind and coordinate. The curved OLEDs are stacked on four different levels of dynamic streamlined curves, such as the traditional East Asian folding screen, which presents many precious works of art, symbolizing the profoundness of Chinese culture.



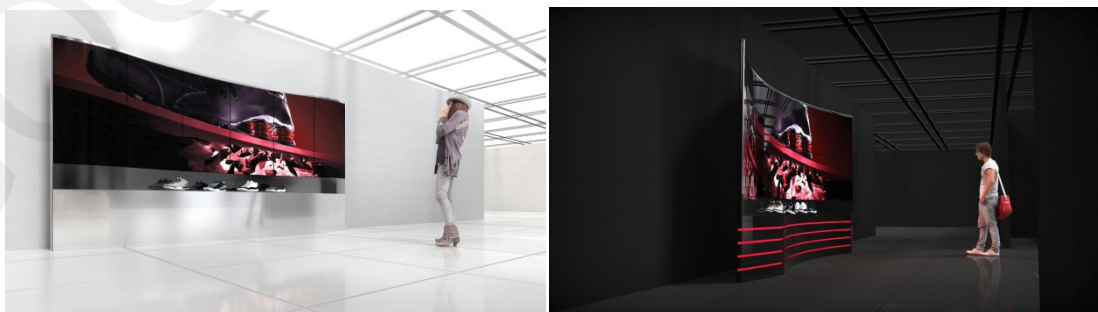
➤ **Ring stitching**

In the summer, the burning sun hangs in the blue sky, which is particularly eye-catching. In the center of the square, a digital signage consisting of three circular OLED screens is as striking as the sun. Its display format is flexible, it can display content separately or together.



➤ **Wave**

The OLED screen is wavy, making the product more expressiveness.



➤ **Others**



Spiral Path



Open

GOOD DISPLAY